

Address: 54 Pah Road, Epsom 1023 Phone: (09) 625 6054 Fax: (09) 625 6814 Email: stjohns@cht.co.nz

Welcome Note

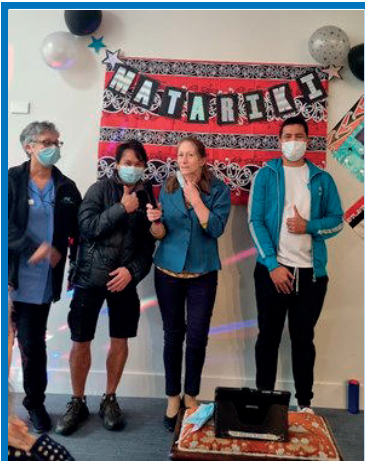
Winter 2023

Kia Ora Residents and Whānau

While we can grizzle about the non-stop wet weather, we can enjoy our cosy indoor activities, a slower pace and an excuse to dip into baked goodies and hot chocolate to fend off the cold. The shortest day has passed and our days are getting longer and lighter and Spring is just around the corner. A reminder that the community still has winter viruses circulating. We ask that you do not visit if you are unwell.

Activities and Celebrations

Carmen, Chris, Jenny (Unit Manager – CHT St Johns and volunteer John



I would like to say a special thank you to Elizabeth Howard for managing the Hospital Activities almost singlehandedly while we looked for a new Team Member.

Elizabeth managed to keep the Group Activities interesting and appealing and ensured those of our residents in need of one on one had the time they needed. My favourite quote from her is: *“it is what the residents want”* when she is planning the programme.

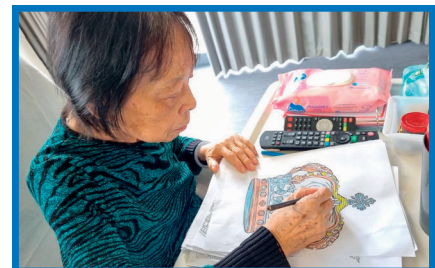
We are delighted to welcome John Bernardo to our Activities Team. John is a qualified Diversional Therapist with two years of experience in Aged Care. John has added talent in both song and dance and we have seen him playing guitar and singing alongside Elizabeth in Suite 3.

Amongst other things this season, we have celebrated the Kings Coronation, as well as our Healthcare Assistants on International Healthcare Assistants day.

July saw two great sessions for all the Residents – Matariki and our Mid-Winter Feast. Matariki was a great success with a special visit from our CHT Community when the residents and Activities Team from CHT Lansdowne came out to join us.

We had a sing along with Kiwi tunes and music as well as a range of traditional eats on hand. Guests and Residents enjoyed and all agreed it was great kai.

Mrs Qui Du helping add a Royal touch to Kings Coronation Celebrations



Address: 54 Pah Road, Epsom 1023 Phone: (09) 625 6054 Fax: (09) 625 6814 Email: stjohns@cht.co.nz

Improvements and Initiatives

Staffing: As CHT is an Accredited Employer, we attracted a further nine new team members. Now that we have added to both our casual and permanent staff, we can minimise the number of bureau staff who were stepping in to provide much needed cover. I would like to extend a big thumbs up and thanks to Jeanette Benterman who has battled through wet weather and mud to put more structure and shape into our gardens around the care home. With Spring on its way I am sure we will see more colour and variety in our outdoor spaces. Curtains for the Suites 7 to 9 are underway and a team of contractors will be touching up walls and removing old handrails in this area – essential rails will be replaced with the new wooden handrails.

Resident Stories

Dawn was born in Auckland and spent time in Wellington. She started working for Berlei as a machinist when she was 15 years old and eventually did bookkeeping and admin for the company. She met and married her first husband when she was 21 years old and had three children.

When Dawn remarried she moved to Hokianga to live on a farm with her second husband. Dawn said her happiest times were in her younger days and she most enjoys time with her family and loved ones. While Dawn has only been at CHT St Johns for a month she has said she feels at home here and likes the staff who are working in her suite.

Dawn Faulconbridge



Elizabeth



Note from Unit Manager

In conclusion, I want to pass on special thanks to Elizabeth Senikacauca who retired this month after working for the trust since December 1999, 24 years. Elizabeth was one of our Night Healthcare Assistants who started work here when the care home had a laundry, an orchard and chooks in the bush out back. Residents often said Elizabeth knew what they needed before they asked for it and many team members will vouch for her calm and gentle manner. Elizabeth has contributed more than time and loyalty to our care home, she has helped to make it more than the sum of its parts.

Kia pai to ra wahine ma. Aroha nui, Jenny and the CHT Whānau. Please remember to pass on any thoughts, comments and suggestions anytime to our Team – or to pass them on to me. My door is always open for visits.

Kia Kaha

Best Wishes

Unit Manager,

Jenny Vollmer

Jenny.Vollmer@cht.co.nz