

Welcome

Summer 2026

Kia ora and welcome to the CHT Beachhaven newsletter.

It has already been a year of change for our home.

We recently said farewell to several valued members of our team. Care Home Manager Sue Pronk has begun an exciting new chapter training to become a primary school teacher. Clinical Coordinator Florence has moved on to a new role at another care home, and Mary-Ann, our Unit Coordinator at Shepherds Park, has also started a new adventure.

We thank them for their dedication and contribution to Beachhaven and wish them all the very best for the future.

## Activities and Celebrations



*Chinese New Year snacks were a tasty treat.*

Valentine's Day brought a lighter moment, with Cupid making a special appearance to share chocolates and pose for photos with residents.

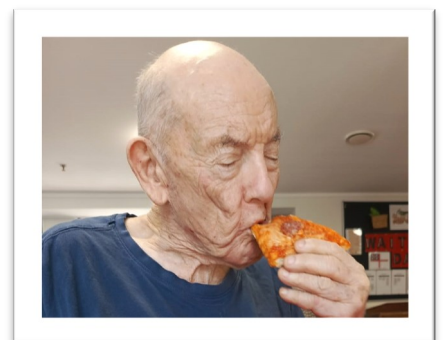
Residents also enjoyed celebrating Chinese New Year. The home was decorated with colourful displays, and residents sampled a range of treats including pineapple cakes, egg rolls, soft fruit puddings, and choco-pies.

### Pizza day

As a special mention, pizza day was a real highlight. With the pizza oven fired up, residents enjoyed the delicious aroma – and even more, the taste.

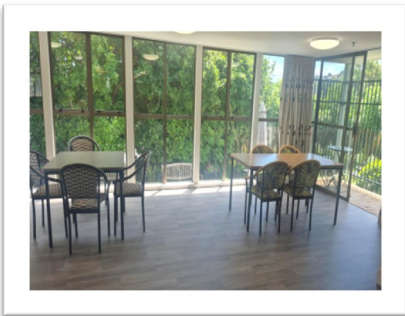
Throughout the year there are many occasions to celebrate, both modern and traditional. Some of the highlights for residents this summer included Waitangi Day, Valentine's Day, and Chinese New Year.

Waitangi Day offered an opportunity to reflect on Aotearoa New Zealand's shared history. Copies of the Treaty of Waitangi were displayed in the home, prompting conversation and reflection. The principles of partnership, participation, and protection continue to guide the work we do here at Beachhaven.



*Pizza Day was a success.*

## Improvements and Initiatives



We are in the final stages of our upgrade, with the vinyl flooring currently being replaced in Kauri Park. As it is such a large area, the work has brought a little disruption at times.

The team has handled the changes with their usual good humour, and it has been lovely to see the spaces gradually refreshed. The newly completed areas are already looking bright and fresh.

## Resident Profile: Michael

Michael Ashdown is a cheerful and friendly resident in our Kauri area. He enjoys a wide range of activities at Beachhaven, especially karaoke, live entertainment, van outings, and time in the sensory room where he can relax with music and aromatherapy.

Michael grew up in Levin and remembers fondly having animals around him. "We had a lot of cats and dogs," he recalled, "and hedgehogs too, because they were cute." He also enjoyed watching horse racing and hoping to pick a winner.

When asked about his best friend, Michael smiled and said, "That was my brother, Tony. He was more grumpy than funny, but he was still my best friend."

Michael attended Levin Convent School. Although the teachers – priests and nuns – were quite strict, he remembers enjoying his time there. His favourite subject was art, particularly painting, which he found relaxing. When asked the secret to a happy life, Michael answered without hesitation: "Ice cream!"



*Michael enjoying music and activities.*

## Note from the Care Home Manager

Kia ora everyone. My name is Miriam Logan and I have recently joined Beachhaven as Care Home Manager, taking over from the lovely Sue.

I have certainly hit the ground running, with several leadership vacancies to work through, but we continue to move forward and I do enjoy a challenge. My background is in nurse management, primarily within private surgical hospitals, so this is my first role in aged care. I am learning a great deal and enjoying the opportunity.

My door is always open if you would like to pop in and say hello. I look forward to meeting many of you over the coming months as we continue supporting our residents and community together.

Best wishes,  
Miriam Logan  
Care Home Manager  
[Miriam.logan@cht.co.nz](mailto:Miriam.logan@cht.co.nz)