

## Welcome

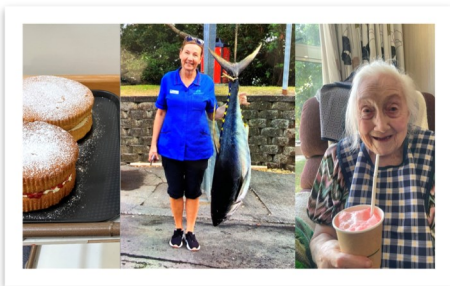
Summer 2025

Welcome to all of our new residents who have joined us at CHT Waiuku this year.

Residents have been enjoying the summer sunshine while having morning tea in the courtyard. The planters and pots are an array of colours. The knitted wraps around trees have added more colour and drawn many favourable comments from residents and visitors. The addition of solar lights to the front of the building add to the ambience at night.

We have been encouraging our residents to keep mobile by attending the walking groups which are making the most of the summer weather.

### *Culinary and Bus Trip Activities*



## Activities and Celebrations

Bus trips have resumed with local trips to the beach and stops for ice cream on the way home.

During one local trip to Te Toro beach, residents were lucky enough to see some fishermen bringing in a big tuna which weighed 44kg. The scale was attached to the crane and the fish was hoisted up. It was the first recorded tuna to have been caught on the West Coast in 20 years.

Trips to Karaka Lavender Farm for morning tea and the ever favourite Operatunity shows were attended in December and February.

We have been celebrating summer here at CHT Waiuku. Activities have been keeping the residents cool with mocktails and ice cream floats. Ice blocks have been given out for a refreshing afternoon treat. We have done lots of baking, making Victoria sponge cakes, pizzas and shortbread biscuits.

Entertainers regularly visit to entertain the residents. These include Music Meister, Mike's Music, Neill's Music and now the lovely Jo who brightens our day with her harmonious voice singing to her Mum. View Rd School choir visited to perform Christmas Carols with local students; Majors and Minors recital group.

Residents and family members helped celebrate an amazing centenarian 102nd birthday with Mary in December and Shirley celebrated her 90th birthday in January, with family members joining for a morning tea celebration.

### *Special Birthdays*



## Improvements and Initiatives

*New dining room chairs—so fancy in red!*



Twenty raspberry coloured dining chairs delivered in December have brightened and refreshed the main dining room.

Many contractors have been on site since January refurbishing the heating boilers and replacing many components of our call bell system. This has meant that, where possible, the volume has been reduced. Room heaters and ceiling lights are to be replaced in the next job.

A beautiful sea themed mural now hides the fence surrounding the generator. This was completed by local student Valerie.

## Resident Stories

Pat was born in Patea, Taranaki in 1947. Pat's Dad was a boiler maker and his Mum worked in the makeup industry.

The family moved to Wellington when he was 2 years old. Pat finished his schooling at Rongotai College. Pat became an apprentice electrician in Wellington.

Pat took early retirement and moved up to Puni. He joined the Waiuku golf club and met lots of locals.

Pat enjoys watching sports on TV and is often found playing games on his computer such as Mahjong and Sudoku. He loves listening to Country and Sixties music.

Pat



## Note from the Care Home Manager

Thank you to the various community groups who visit and contribute to the life of our residents at CHT Waiuku. Thanks to Barry from Waiuku Lions Club who every December drops off tables, chairs and crockery for the Christmas lunch along with boxes of Christmas cakes which everyone enjoys. At this facility many friends and family members visit. During the summer period it is always wonderful to meet and greet family/friends who have returned to NZ for Christmas. Many staff have also been fortunate to travel overseas to spend Christmas with their families. Thank you also to CHT CEO Carriann and Board member Robyn who visited and spoke with residents.

Best Wishes

Care Home Manager,

Margaret Ward

[Margaret.ward@cht.co.nz](mailto:Margaret.ward@cht.co.nz)