

Welcome

Summer 2025

Kia ora tātou . We extend a warm welcome to all our residents, old and new in 2025. We believe our new residents feel welcome will settle in quickly

Last year was a year of change for us at Hayman. It has been 12 months since we have joined the CHT family. We are happy and grateful for the growth and development we were offered by the management team and the Board of Trustees. Staff and management have been trained successfully on a complete new set of systems. CHT has also introduced a new learning platform for continuous development in line with the Ministry of Health Requirements. We passed our External Certification audit in November 2025.

Activities and Celebrations

Visit to Fo Guang Shan Buddhist Temple NZ
(Chinese New Year Celebration)



Last December we joyfully welcomed the season of giving with our heart-warming celebrations filled with music, love and the spirit of togetherness. Our regular church groups and volunteers joined us to make this a truly special event for our residents. We prepared beautifully wrapped gifts for each of our residents, we sang and danced and performed. Residents who could not attend were visited in their rooms.

The photos show a selection of a few of the events and activities this season.

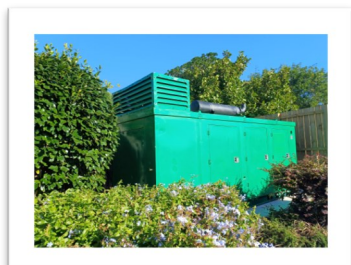
Friendly Croquet game between CHT and BUPA
(Erin Park) residents



Chende Li's family during the Chinese New Year
Celebration

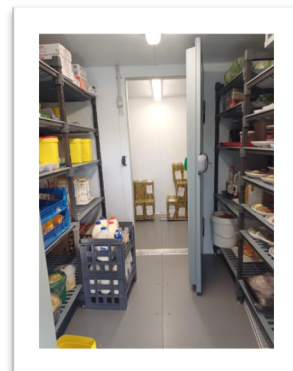


Improvements and Initiatives



The installation of an emergency generator has improved the resiliency of the power supply for Hayman.

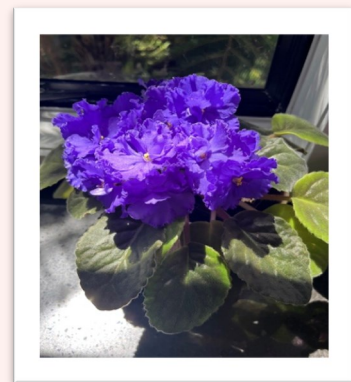
We have also replaced all the old fridge freezers with a new walk in fridge freezer in the kitchen.



As part of providing care and a comfortable environment, we have replaced the old pink lounge chairs in the dementia units and added enough recliners for the hospital residents.

Resident Stories

Lynsie Kerr was born in the 1941 in Mt Eden and lived there for six and a half years. She has one younger sister, Patricia and they are very close. The family moved to Mangere East where she went to school. Growing up her hobbies were playing cricket and tennis. She enjoyed knitting and sewing and remembers helping her parents in the garden. They were lucky to have half an acre section, it was at the end of the war and they were in the depression. She was employed as a machinist/seamstress. Lynsie met her husband John when she was 19 years old and had four children Ann, Nicky, Raewyn and Tony. They moved then to Manurewa, it was mostly farm land back then. John was a train engine driver and she was a home maker as the children grew up. When the children got older she took a job as a cleaner and then became a teachers aid at Manurewa High School. In recent years she developed health issues and that is why she resides at Hayman. She loves plants and has beautiful African Violets growing in her room.



Note from the Care Home Manager

Thank you to the staff who give so much of their time, creativity and compassion to the residents. We love how you go out of your way to participate in events. I would also like to thank the families for their visits, comments and friendliness. In 2025 our aim is to improve communications and strengthen our relationships with all our customers.

Best Wishes

Care Home Manager,

Christine Beukes

Christine.beukes@cht.co.nz

